



JUSTICE
TOWER

**JUSTICE
TOWER
THE LANDMARK
OF NEW
ERBIL**





CONTENT

- 4- INTRODUCTION
- 6- INTRESTING NUMBERS
- 8- TOWER ANNOTATION
- 10- FEATURES
- 20- OFFICES
- 42- LUXURY BUSINESS HOTEL
- 54- FURNISHED APARTMENT
- 60- OUR ENTERTAINMENT
- 62- CAFÉ VILLAGE
- 68- RESTAURANT
- 72- DEPARTMENT STORE
- 76- GYM & POOL
- 80- LOCATION & CONTACT



NASRI GROUP OF COMPANIES LTD.



INTRODUCING JUSTICE TOWER:

Justice Tower, a Signature Project, is developed and constructed by NASRI GROUP OF COMPANIES. Proud to be one of the major Development Project in Iraq, executed in July 2016 Justice Tower is a Commercial Complex consist of:

- More than 1,000 Offices in different sizes with High Tech facilities meeting all the needs of Local & International Companies and Institutions.
- Luxury Business Hotel with 384 rooms having various Meeting Rooms, Conferences and a large Banquet Hall. The hotel provides leisure facilities in the All-Day Dining, Executive Floor, Specialty Restaurants, SkyBar at the top roof, Spa, Gym & Swimming Pools as well as a landing platform for helicopters to welcome VIP guests.
- All means of Entertainment - the complex provides both occupants and visitors a range of Restaurants, Coffee shops, Department Store and Health Club with Swimming Pools.

Justice Tower, a distinctive architectural character, is considered as one the most important icons & architectural monuments of the skyline of the modern city of Erbil. It is a 40 story building where the height of the tower is more than 130 meters with a total built up area of 206,000 sqm.

The design shows all the tower's facilities having a wonderful panoramic view of the city of Erbil which cannot be obscured by anything, you feel as if you are flying by plane.

It is indeed a huge and luxurious building equipped with the latest, modern technology and adopting high speed elevators that can serve all the occupants and visitors of the tower, which is expected to reach more than 7,000 persons per day.

Location, Location, Location

Justice Tower is located in the most luxurious part of new Erbil City, 5 km away from Erbil International Airport, 3 km away from Downtown Erbil (Citadel), walking distance from Sami Abdul Rahman Park, the largest green area in Erbil where part of it is utilized as a Fair - Erbil International Fair Center, and next door to New Central of Court Complex Building of Erbil.

SOME INTERSTING NUMBERS

40

FLOORS

1,000

OFFICES

200

STUDIO SUITES

384

HOTEL ROOMS

16

CAFÉS

19

ELEVATORS

AREA/SQM

206,000

TOTAL BUILD UP
AREA

43,000

HOTEL

1,400

GYM & POOL

1,900

DEPARTMENT
STORE

HOTEL

GYM & POOL

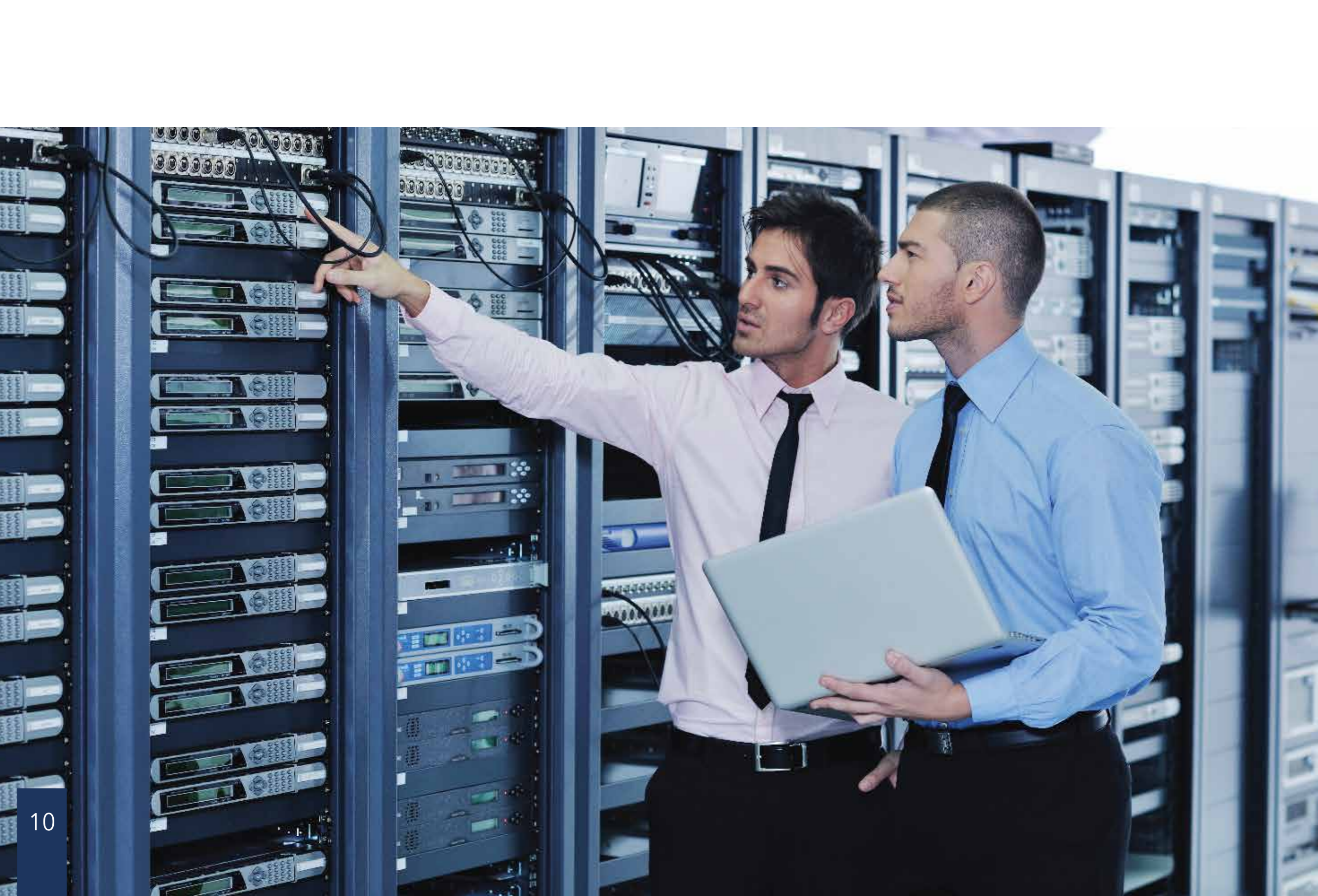
OPEN PLAN OFFICES

PRIVATE OFFICES

DEPARTMENT STORE

CAFÉ VILLAGE





JUSTICE TOWER FEATURES



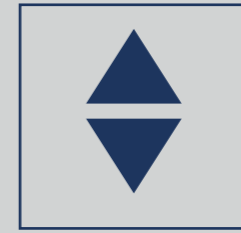
RECEPTION



CONNECTION



SECURITY



ELEVATOR



JUSTICE
TOWER

WILL TAKE YOUR BUSINESS EXPERIENCE TO ANOTHER LEVEL



RECEPTION

Front Office Desk
Full Support
during business hours
Fully Furnished Lobby





CONNECTION

Fibre Optic Network
Huawei Switches
Cisco IP Phones
IP TV

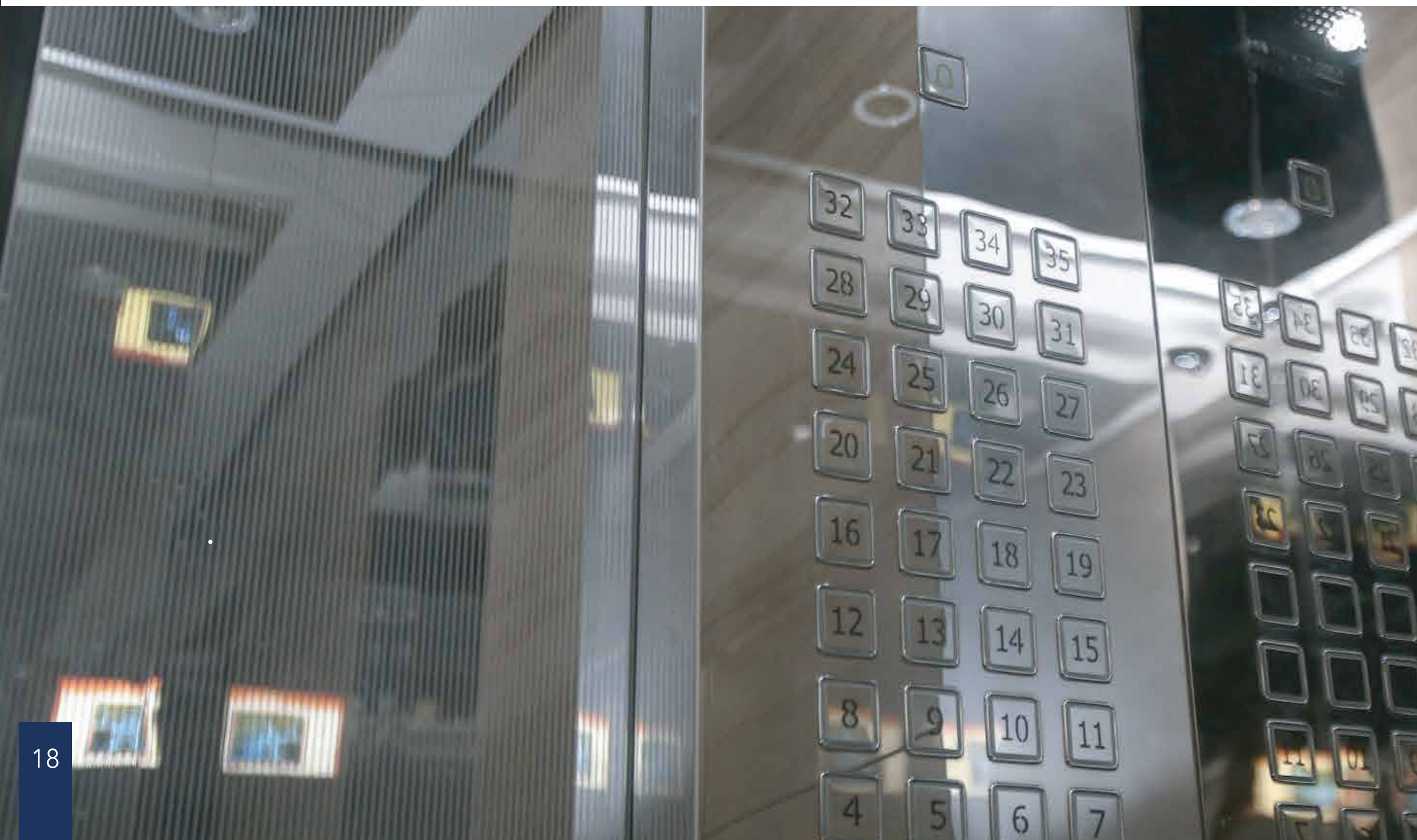




SECURITY

Fire Alarm System
Fire Fighting Network
IP CCTV
Access Control System
Professional Security Team





FAST ELEVATOR

Mitsubishi Elevators

Speed 4m/s

19 Elevators

20 persons per elevator





JUSTICE TOWER OFFICES



JUSTICE
TOWER





INTRODUCING OUR OFFICES

Offices are designed to create an inspiring business environment. Business meetings don't have to be limited to the luxury of the office, but can be held in Restaurants or Coffee Shops at the Café Village located on the Lower Ground Floor. Offices space design consist of both Private Offices and Open Plan Offices.

PRIVATE OFFICES

Offices space range from 62 sqm up to 160 sqm with a panoramic view of the city. The Private offices will be considered as one of the best choice in Erbil for every Established or Start-Up Company, every Businessman, Entrepreneur, Lawyer or Engineer.

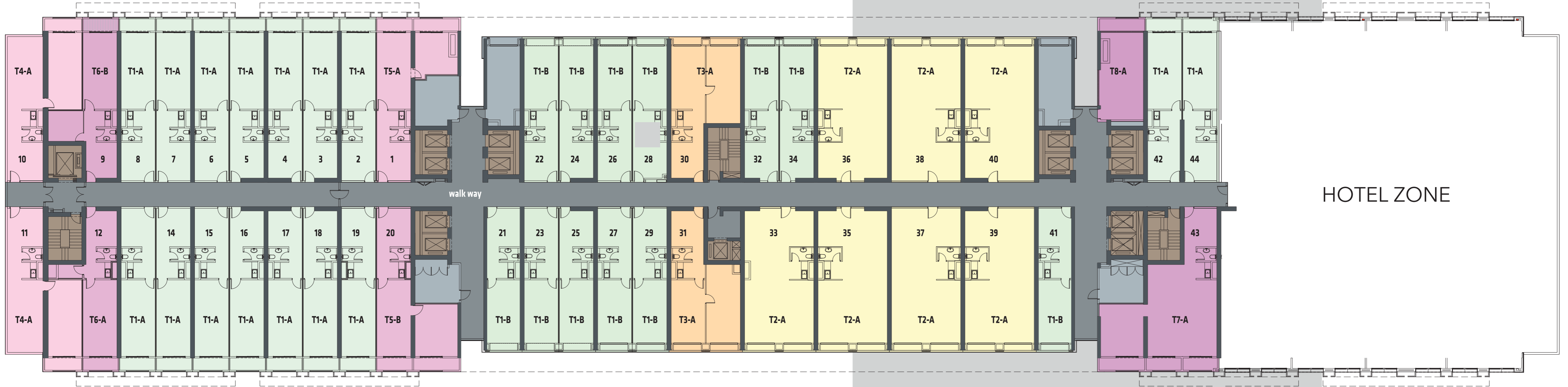




The main function is offices in different sizes, areas & types. A large number of offices is provided as per the needs with different areas (small, medium & large) having high technology features.

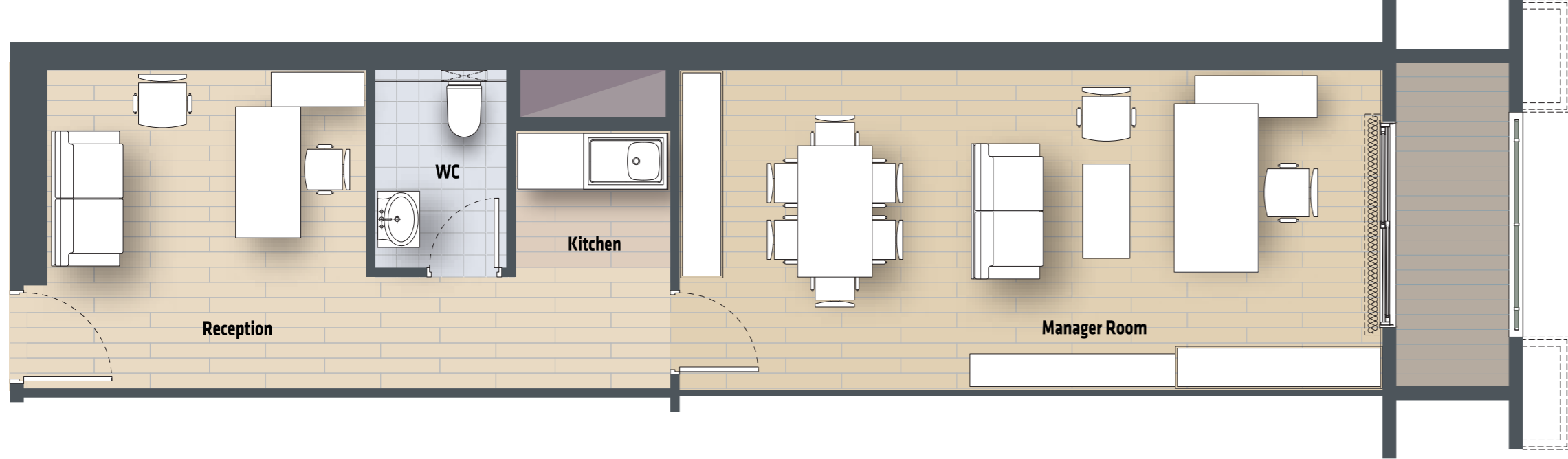


TYPICAL FLOOR PLAN

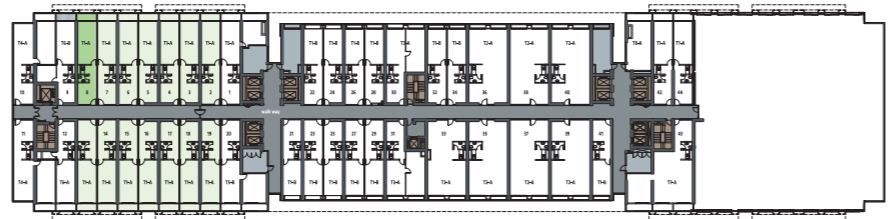


HOTEL ZONE

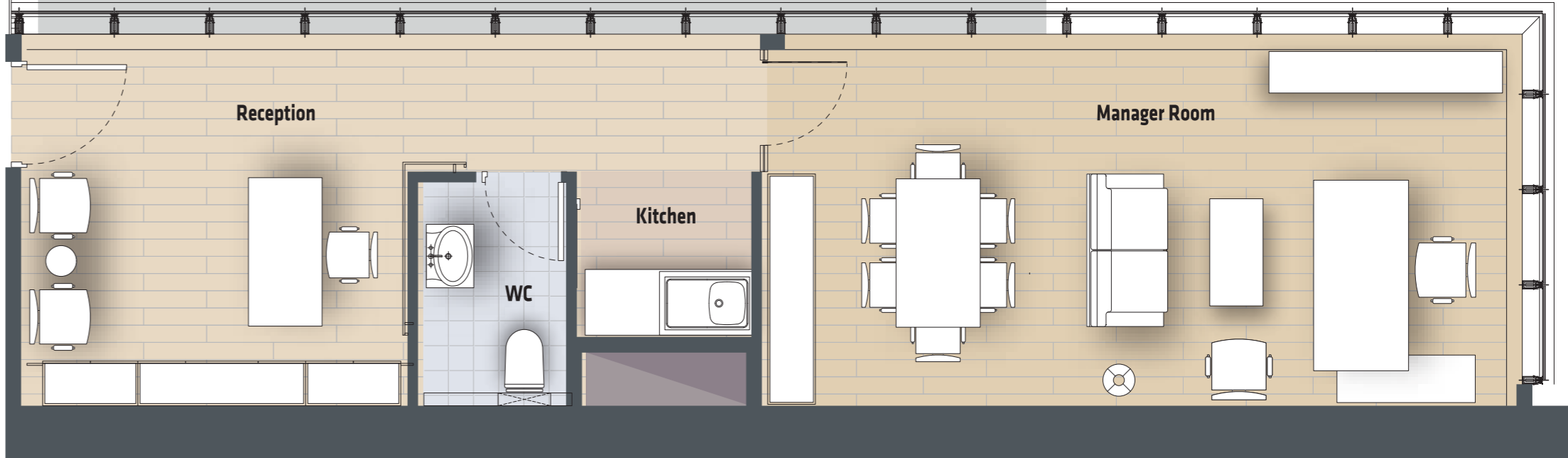
OFFICE TYPE: T1- A



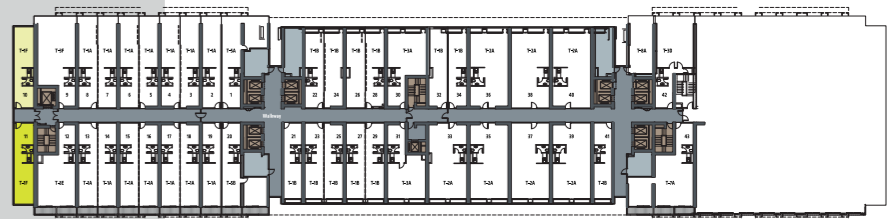
Area	76 sqm
Floor	1 st to 26 th



OFFICE TYPE: T1- F



Area	75 sqm
Floor	1 st



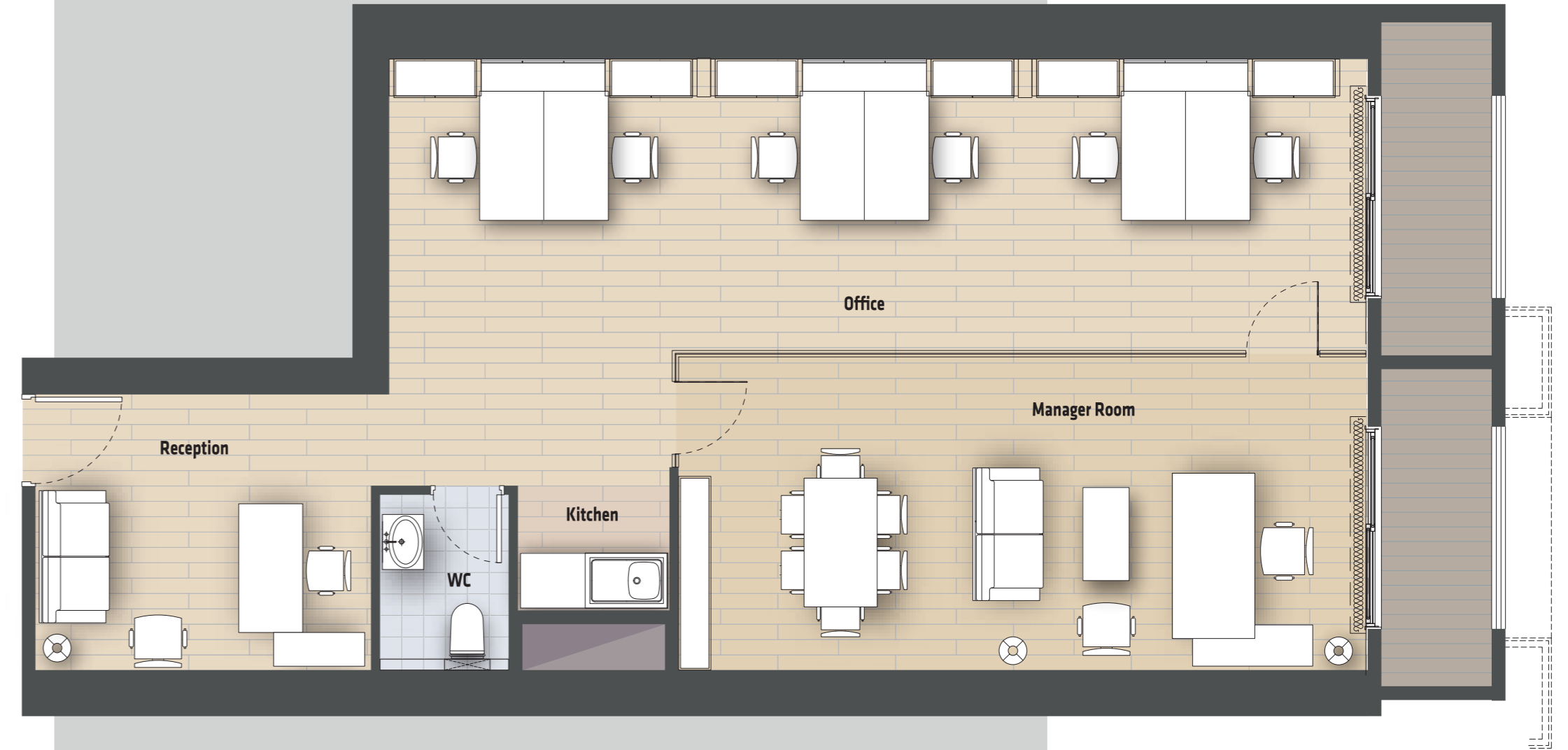
OFFICE TYPE: T2 -D



Area	152 sqm
Floor	25 th to 26 th



OFFICE TYPE: T3 - F



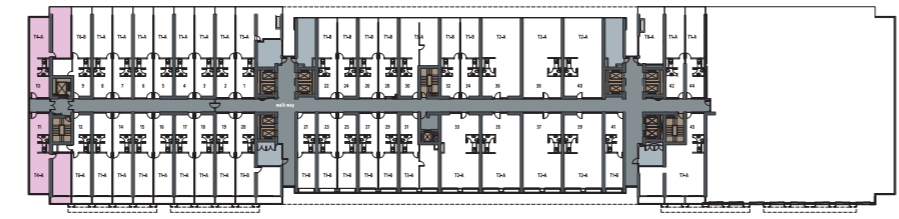
Area	133 sqm
Floor	1 st



OFFICE TYPE: T4- A



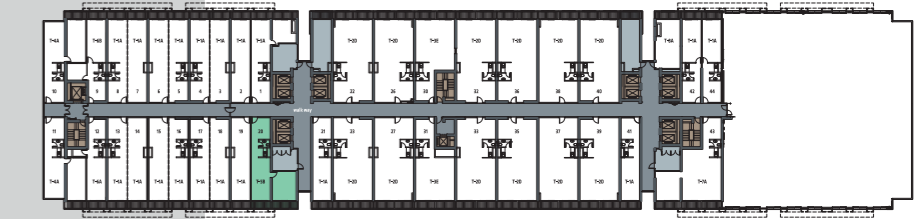
Area	118 sqm
Floor	2 nd to 26 th



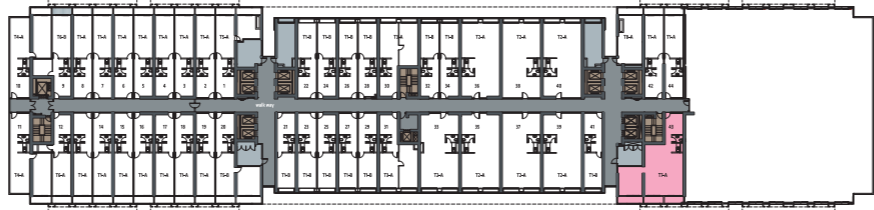
OFFICE TYPE: T5- B



Area	117 sqm
Floor	1 st to 26 th

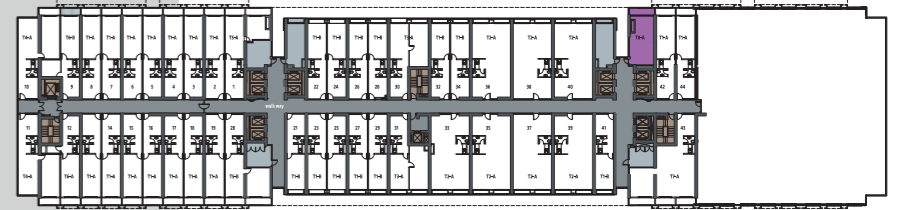
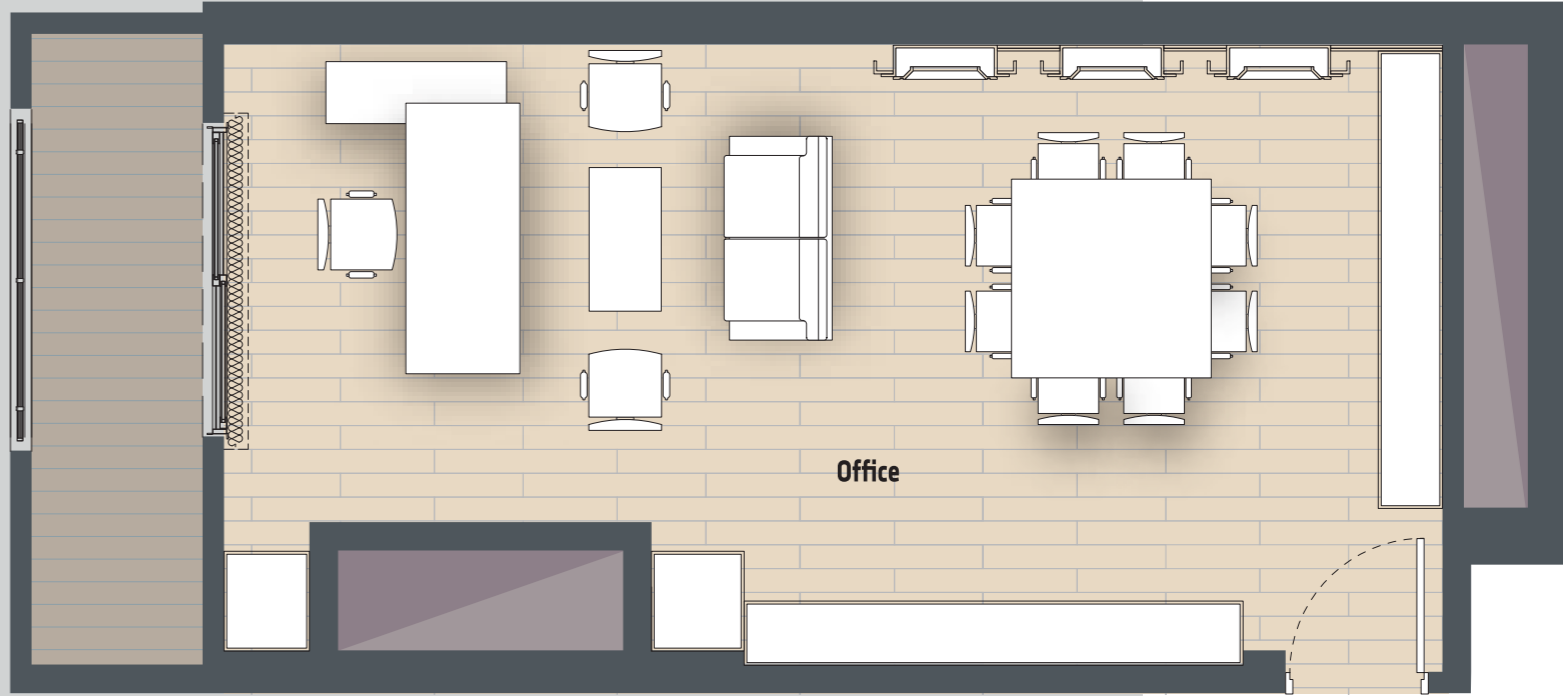


OFFICE TYPE: T7- A



Area	166 sqm
Floor	1 st to 26 th

OFFICE TYPE: T8- A



Area	63 sqm
Floor	1 st to 26 th



OPEN PLAN OFFICES

Offices space range from 345 sqm up to 810 sqm with a panoramic view of the city of Erbil. The open plan offices are designed to fit the standards required by Multinational and Local Big Enterprises. The Business Community developed gives every member of this community, specially the foreigners, a secure and comfortable business environment keeping every member at its best productivity during business hours.



33RD FLOOR PLAN

FLOOR PLAN FROM 27 TO 34





JUSTICE TOWER LUXURY BUSINESS HOTEL



JUSTICE
TOWER

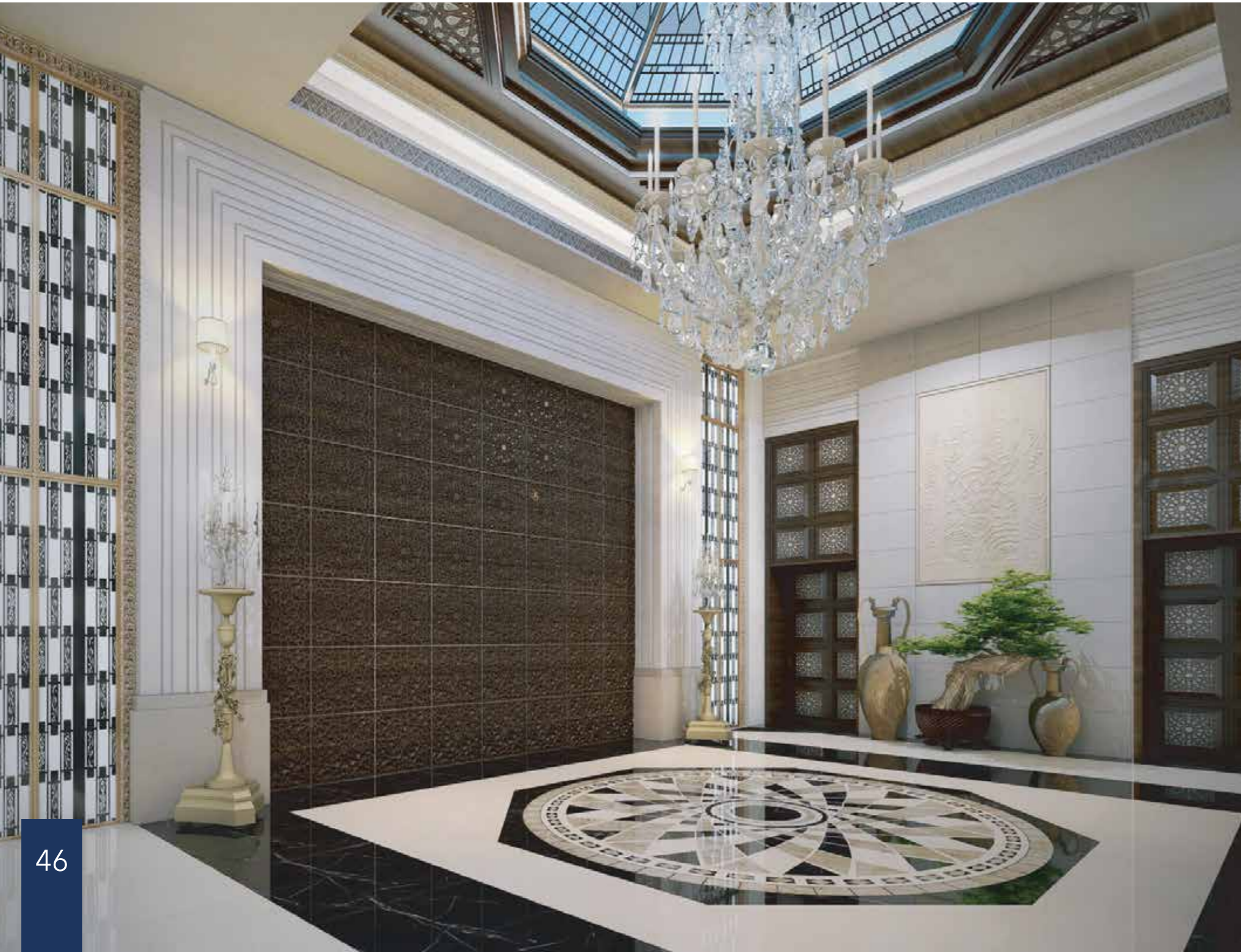
IMMERSE YOURSELF IN LUXURY

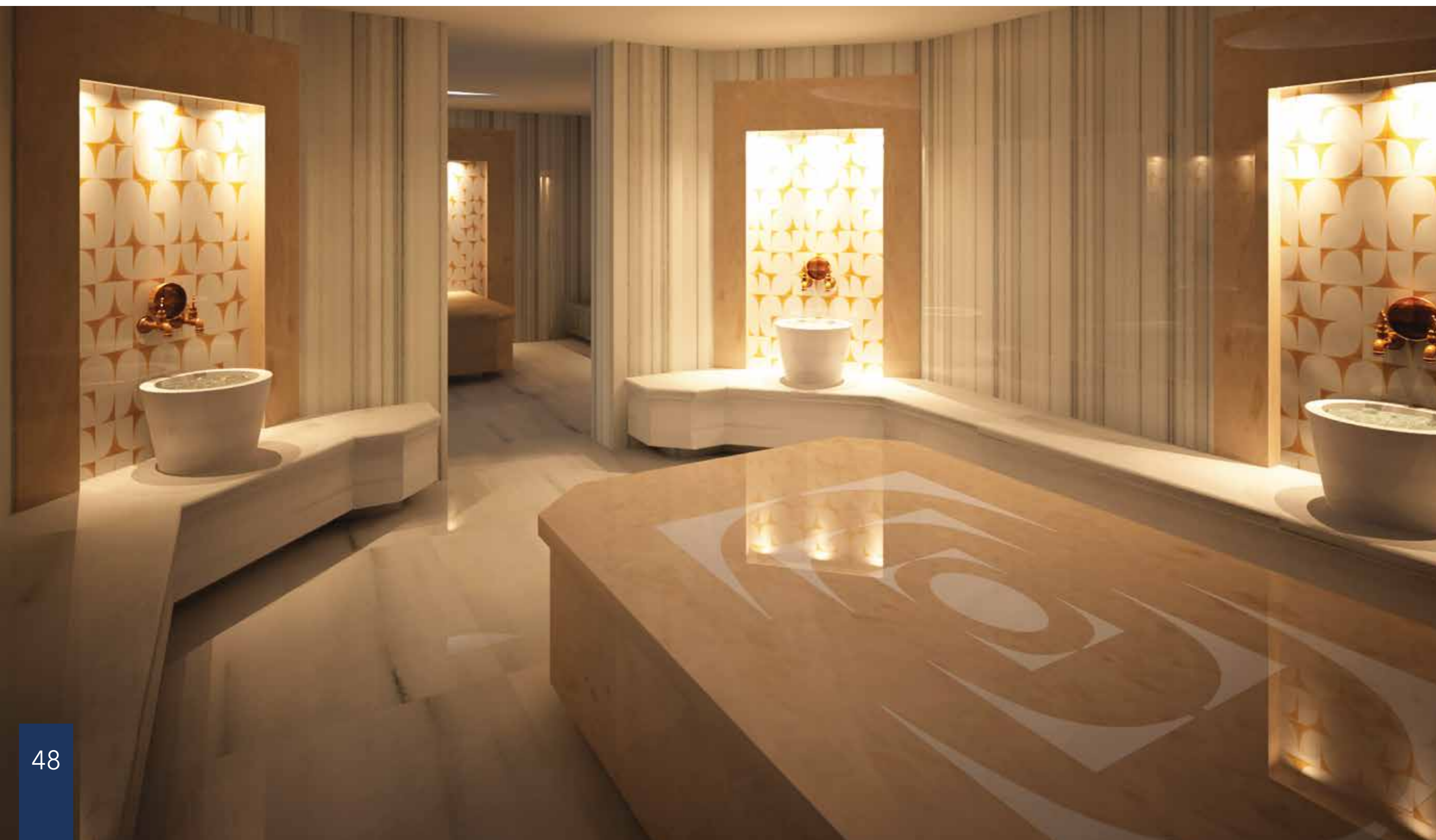
Located in the most luxurious part of new Erbil City, 5 km away from the airport, 3 km away from Downtown Erbil (Citadel), walking distance from Sami Abdul Rahman Park (The International Fair Centre) and adjacent to New Erbil Court Complex Building. With Premium Amenities and an internationally inspired Business Center and Leisure Spa, this upscale heaven is a luxury hotel that celebrates the emerging business and pleasure destination.



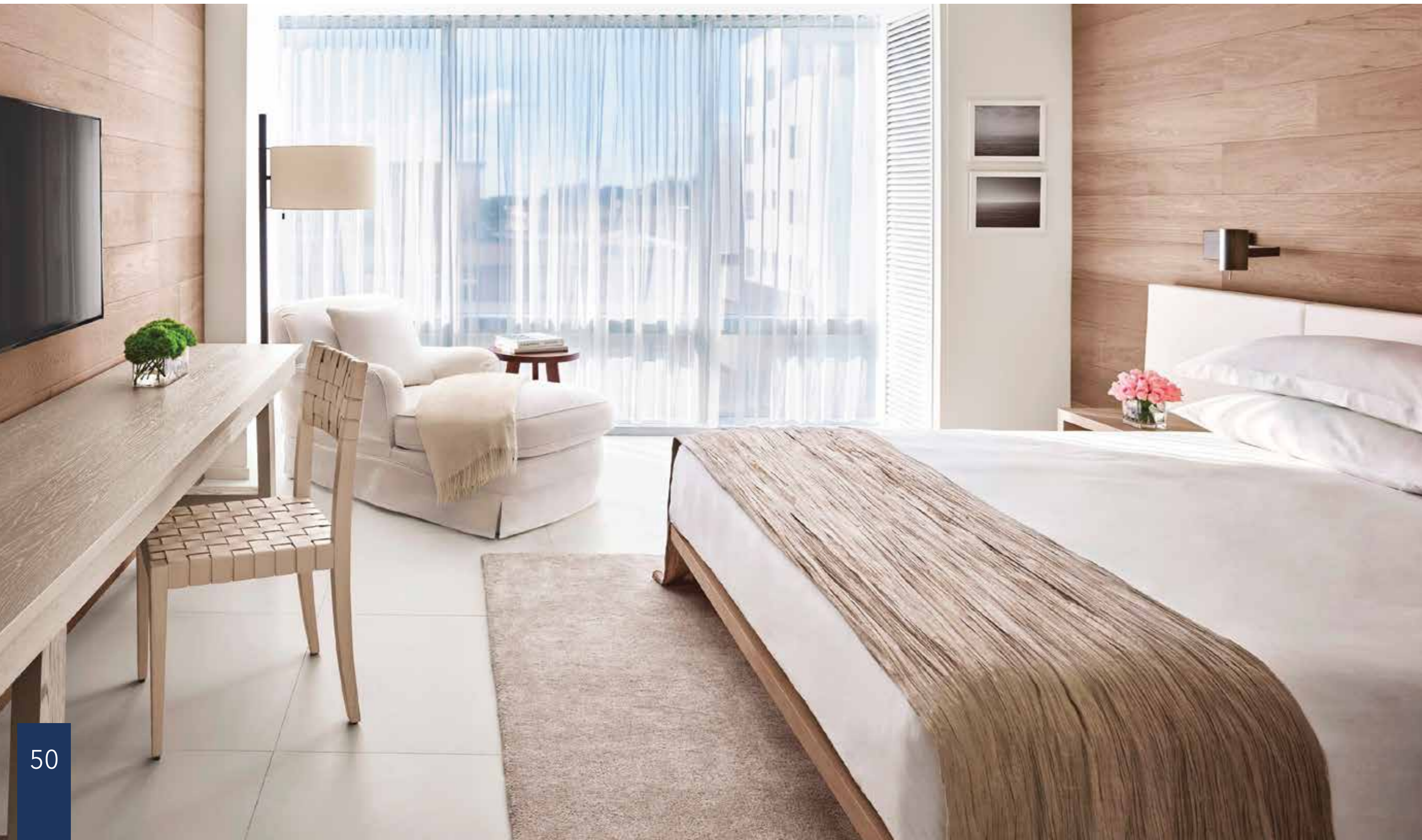
THE HOTEL FEATURES & AMENITIES

- 384 luxury rooms in different sizes starting from Standard Rooms, Suites & Suite Apartments.
- All Day Dining Restaurant and Lounge Bar in the Lobby.
- Luxury Theme Restaurant and SkyBar in 34th & 35th floors.
- Executive Floor for VIP Guests in 27th floor.
- A Full Business Center with meeting and event spaces including
- Ballroom for 800 persons can be divided to 3 equal parts in 35th floor.





- Leisure spa in 33rd floor
- 15 Conference & Meeting Rooms in different capacities in 34th floors.
- Fitness Center in 34th floor and an Infinity Pool in 35th floor.
- Heliport at the Top Roof for VIP Guests.



GUEST ROOM FEATURES & AMENITIES

Contemporary in style with floor-to-ceiling windows offering views of the beautiful city of Erbil, all the 384 rooms are equipped with the convenience of internet access and feature a dedicated work area, which includes a remote connectivity unit. Contemporary interiors influenced by Modern Art and the subtle colour palette of the rooms offer tranquility and refined comfort.



HELIPAD IS PROVIDED AT TOP ROOF FOR VIP GUEST WITH DIRECT CONNECTION TO THE HOTEL LIFT CORES.



JUSTICE TOWER FURNISHED APARTMENT



JUSTICE
TOWER

FURNISHED APARTMENT

200 Residential Furnished Studios, it's perfect for the expats. Very compact and comfortable studios with kitchens. VIP, Businessmen and expats are provided with luxury establishment, high tech and business oriented services and housekeeping.



Modern accommodation studio designed for VIP, businessmen expats, established with high tech infrastructure.



FURNISHED APARTMENT PLAN



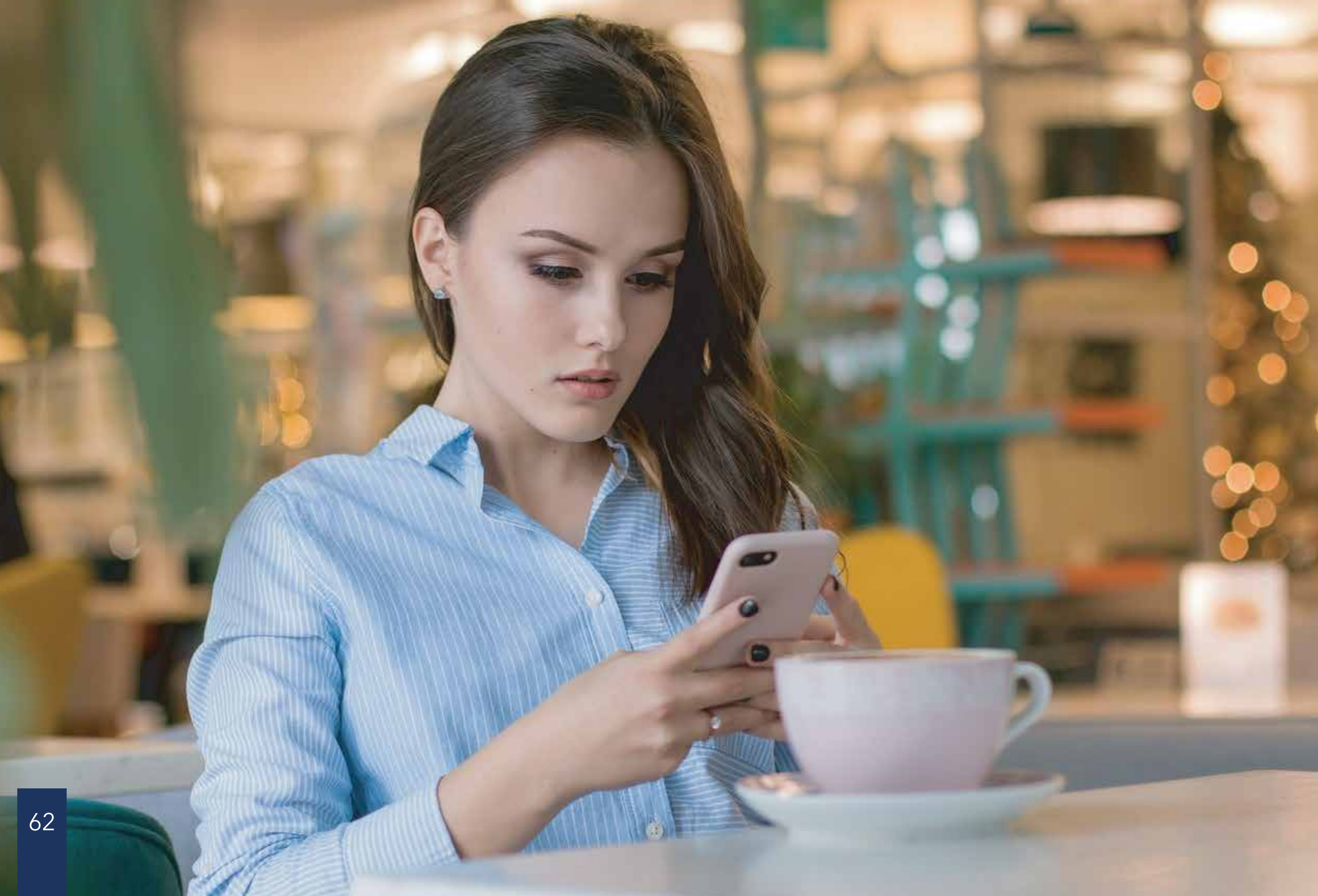
Area	67 sqm
Floor	1 st to 18 th



JUSTICE TOWER ENTERTAINMENT



JUSTICE
TOWER



JUSTICE TOWER CAFÉ VILLAGE



JUSTICE
TOWER



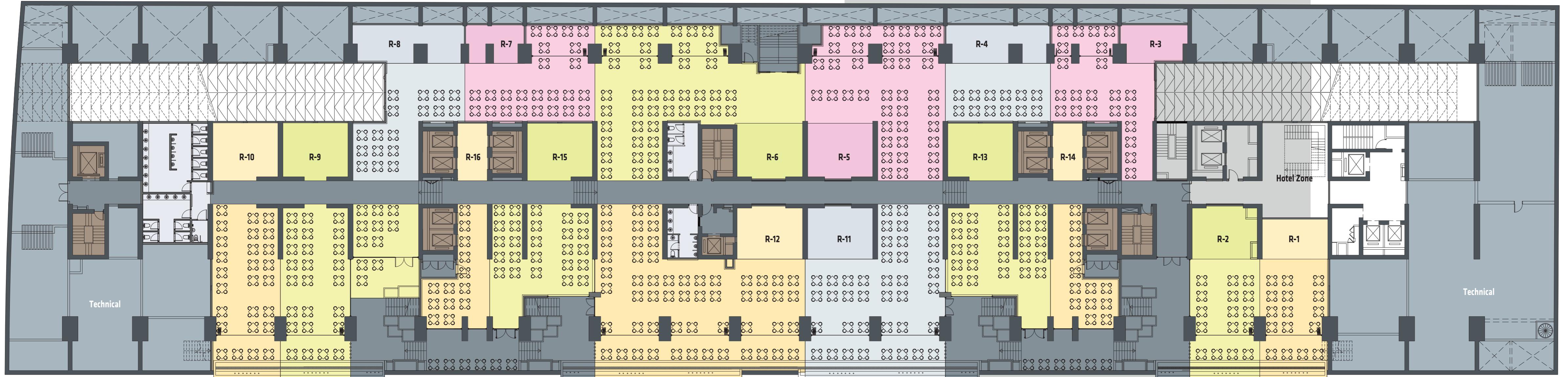
CAFÉ VILLAGE



16 Food Court Stations & Chains at lower ground level. It is also a great place for various types of professions to meet in a good comforting and relaxing atmosphere. It simply mixes business with leisure.



LOWER GROUND FLOOR PLAN





JUSTICE TOWER RESTAURANT



JUSTICE
TOWER

RESTAURANT

Theme Restaurants at level 20th , have an amazing view to Erbil City, with all the supporting facilities exceeding an area of 1,100 sqm





JUSTICE TOWER DEPARTMENT STORE

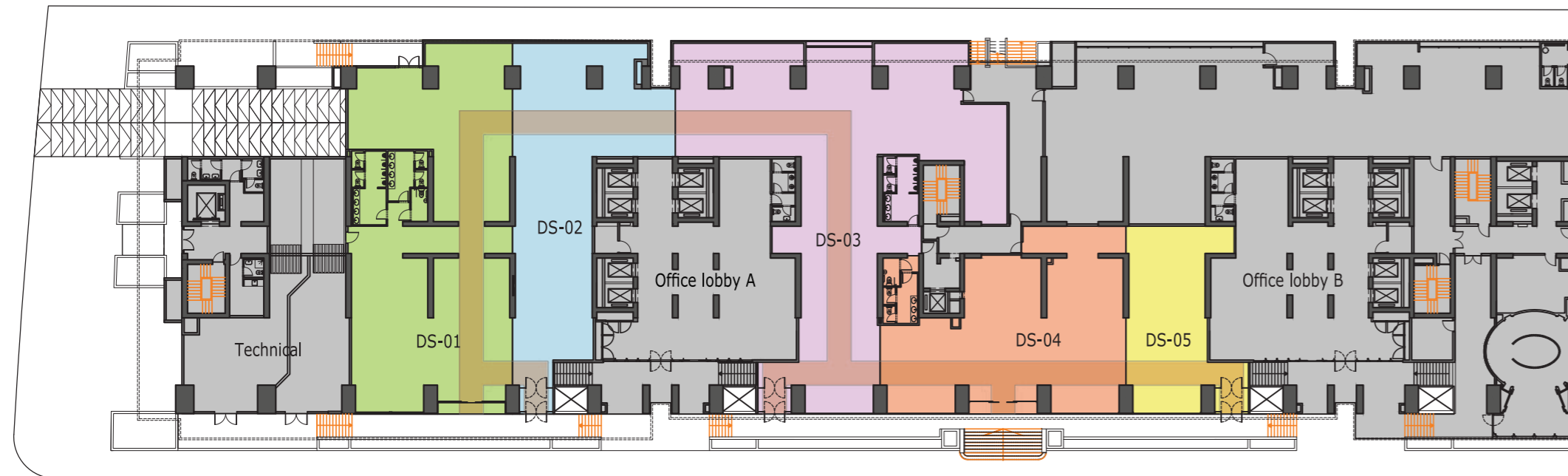


JUSTICE
TOWER

DEPARTMENT STORE

With world class retailers and family friendly amenities, we offer the best of everyday, all in one place, at the upper ground level with a total built up area of 1,900 sqm.

The Department Store serves all those people occupying the Tower and the neighboring areas like the New Court Complex Building which will become a special destination in Erbil City.





JUSTICE TOWER GYM & POOL



JUSTICE
TOWER

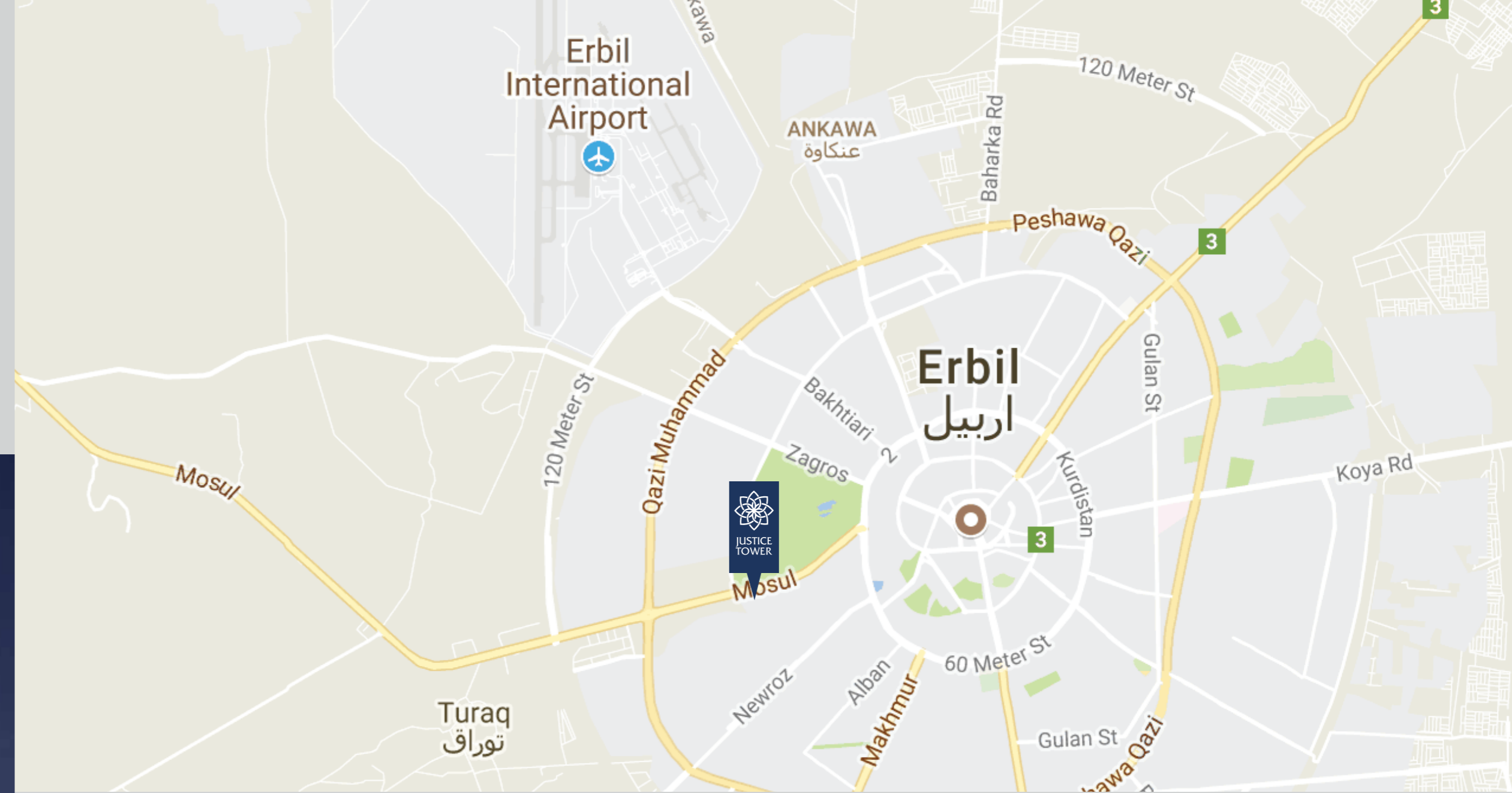


GYM & POOL

The building contains a high established Gym Fitness Center, close to offices and resident studios at level 35. Enjoy Justice Tower swimming pools located beside the SkyBar, with special infinity design shape end, perfectly established to provide a healthy atmosphere for the offices' workers, residents & memberships.



- 5 km away from Erbil International Airport
- 3 km away from Downtown Erbil (Citadel)
- Walking distance from Sami Abdul Rahman Park (The International Fair Centre)
- In front of New Erbil Court Complex Building



General Information:

+964 750 2000 300 | +964 750 2000 400
Email: info@Justicetower.com

Sales & Marketing:

+964 750 2000 500 | +964 750 2000 600
Email: sm@Justicetower.com

Operation Manager:

+964 750 2000 900
Email: om@Justicetower.com



www.Justicetower.com

Mosul Road, in front of Sami Abdulrahman Park, Erbil - IRAQ



